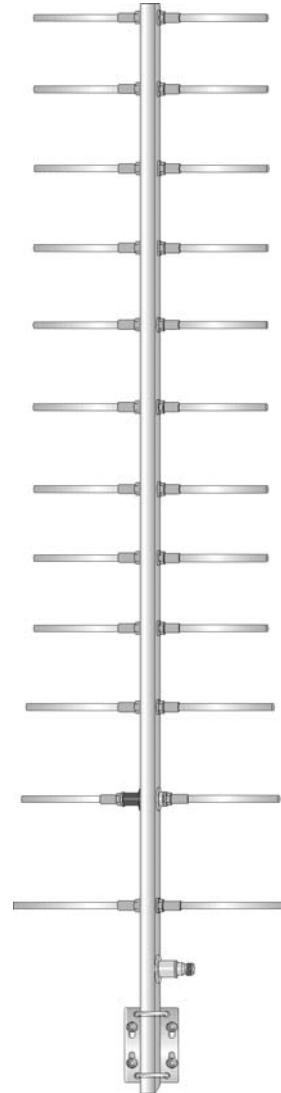


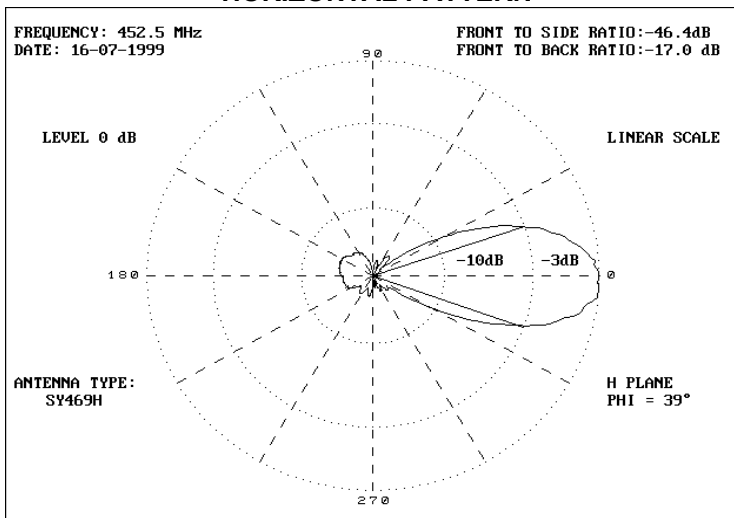
12 elements yagi antenna,  
Lightning protection.

**MAIN CHARACTERISTICS**

|                        |                                |
|------------------------|--------------------------------|
| Type                   | : 12 el. Yagi                  |
| Frequency range        | : 435 - 470 MHz                |
| Input impedance        | : 50 ohm                       |
| V.S.W.R.               | : < 1:1.5                      |
| Beamwidth -3 dB        | : H plane 39° - E plane 43°    |
| Maximum rated RF power | : 200 watt                     |
| Polarization           | : Vertical or Horizontal       |
| Gain                   | : 11 dBd                       |
| Type of connection     | : N female                     |
| Mounting hole          | : From 30 to 62 mm master tube |
| Boom material          | : Anticorodal                  |
| Elements material      | : Anticorodal                  |
| Wind resistance        | : 120 Km/h.                    |
| Dimensions             | : 1960 mm x 362 mm             |
| Net weight             | : 3200 g                       |



**HORIZONTAL PATTERN**



**VERTICAL PATTERN**

